

Practical, Cost-Effective Solution for Data Storage Consolidation



SL5650

Stardom-iSCSI series SL5650 4-bay mini-tower and SL7650 4-bay 1U rack are fully embedded iSCSI RAID storage solutions. The products demonstrates Syne's strong commitment to support the data storage strategy in the mid-size and enterprise IT.



SL7650

Stardom-iSCSI RAID Subsystems are the most cost-effective embedded solution, completely integrated with a high-performance controller offering data-protection capabilities which meet or exceed the highest industry standards and provides a great solution for the SMB market.

Stardom-iSCSI intelligent iSCSI storage RAID subsystems are the more affordable alternative to Fibre Channel SAN Implementation and provides much faster performance than found in the existing *NAS (Network Attached Storage)* products.

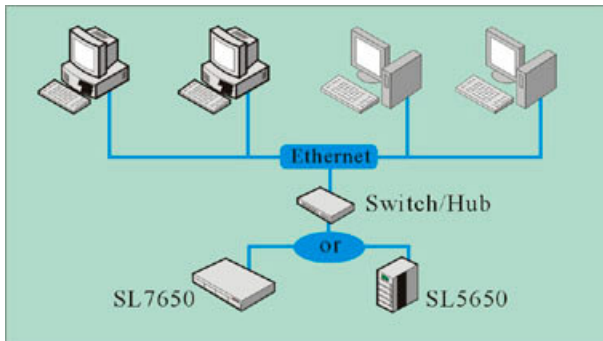
Based on the Intel IOP80331 processor, SL5650/SL7650 series can provide expansion for 4 additional SATA-II drives utilizing high transfer rate by dual Gigabit LAN port.

Data Sharing and Remote Data Access Made Possible

SL5650/SL7650 are compatible with different OS; it supports single/multiple LUN functions that allow data sharing for multi-servers simultaneously and provide high bandwidth for applications such as SQL database.

No Additional Network Costs

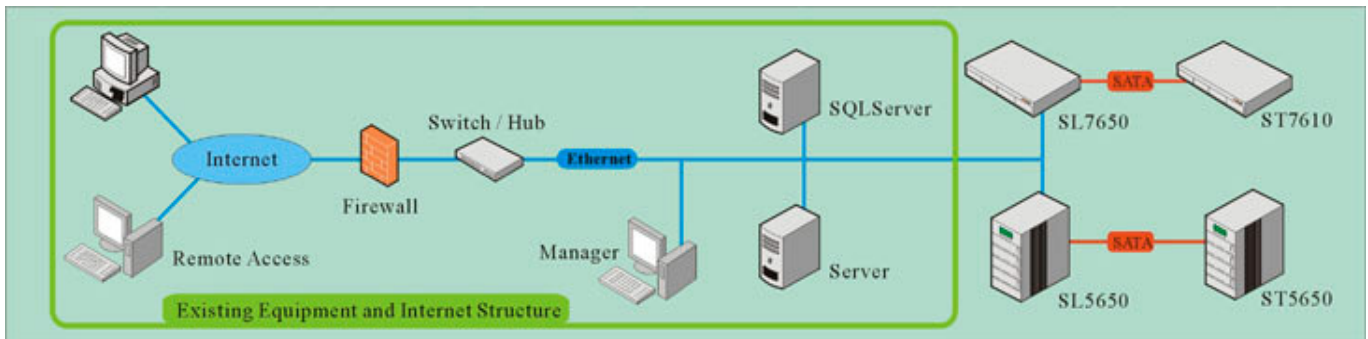
You can implement Stardom-iSCSI units conveniently on your existing LAN to access data or application programs with no added costs for additional switch or cabling.



Data sharing: By LUN function, it allows data sharing for multi-servers simultaneously.

Easy to manage: Cross platform for Windows, Mac & Linux; the Web-based interface offers IP based management and system monitoring.

Market: SMB, SOHO Group, Computer Center, Small Home Theater and Internet Cafe.



Remote Access: Using dual port Gigabit Ethernet connection, these units allow remote access to data with high transfer rate up to 200MB/s.

High Expandability: Volume and capacity expansion is as easy as adding a hard drive to your server. Up to 32 simultaneous LUNs can be chained for online data access with absolutely no path conflict.

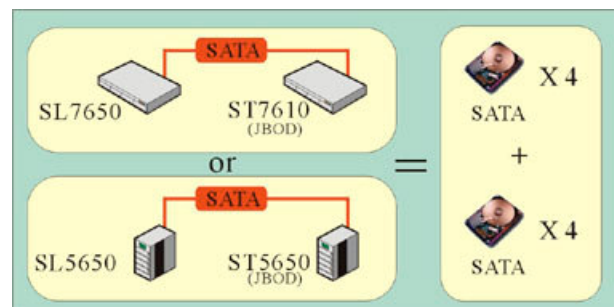
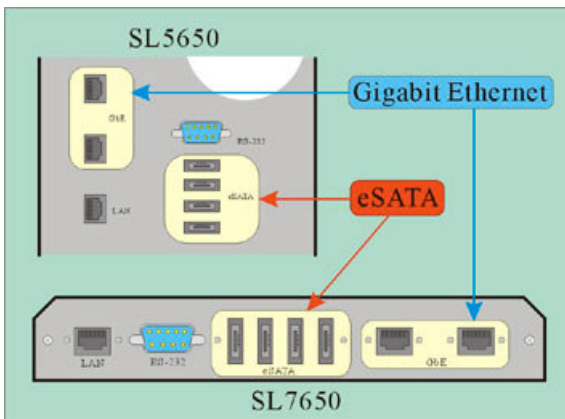
Fault-Tolerant: Using an Intel IOPS80331 processor, these units can offer RAID level 0,1,3,5,6,10,30,50,60 for data protection and security.

Low TCO: They can be implemented along with the existing equipment into the same network structure. This ultimately saves on the TCO.

Market: SMB, SOHO Group, Audio & Video Editing Center.

Key Features

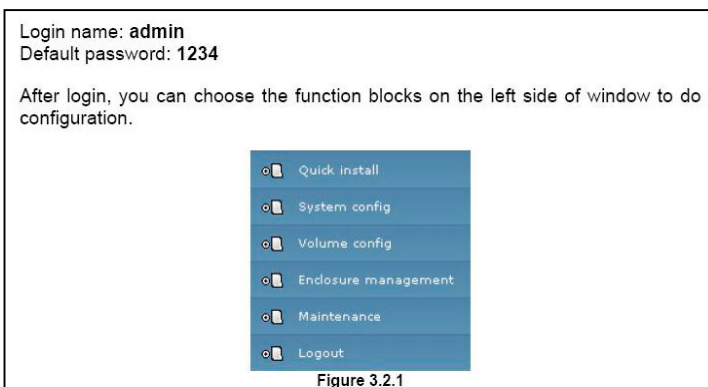
4 x eSATA ports for expanding capacity, can upgrade to 8-drives on the fly.



The parent unit carrying the RAID and iSCSI controller provides 4xSATA drives in a 4-bay mini-tower or 1U rack format, however you can add another 4-bay external enclosure (4-bay mini-tower or 1U rack) via 4 x eSATA ports on the back. This can increase the unit capacity to an 8-drive iSCSI/RAID subsystem. This feature makes capacity expansion easy by using the same controller eliminates the need for purchasing another complete unit.

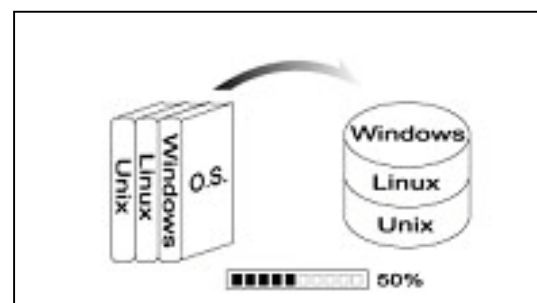
Web-based interface, easy to operate

SL5650/SL7650 allow you to set the RAID Level, H/W parameter and inspect the system status via a WebGUI or Serial Port (RS-232) connection. A large disk space can be created for the server/s via iSCSI Initiator that offers total control of storage resources more efficiently from a single point of access.



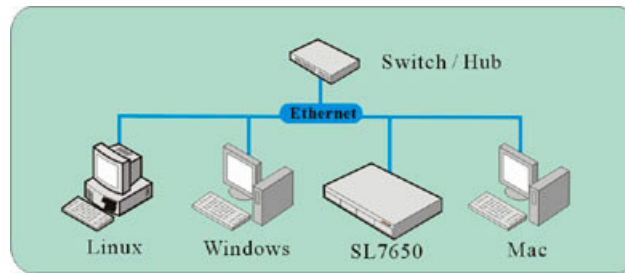
Online Data Auto-Rebuilding

The system will auto-rebuild the data by Hot-Spare, can do parity check after a hard drive replacement and does not require any shutdown.



Supports INITIATOR for different OS Platforms (Windows/Mac/Linux/NetWare)

Free Initiator software or an iSCSI processor based HBA for high I/O applications can be used to access iSCSI units



Specifications:

Model No.	SL5650-4S-L4D	SL7650-4S-L4D
CPU	Intel 80331 64bit 500Mhz RISC processor	
RAM	DDR 333 512MB	
Host Interface	Dual Gigabit Ethernet	
Driver Interface	SATA I / SATA II	
Transfer Rate	Up to 200Mb/s	
Hard Disk	4; Extends to 8 HDDs	
RAID Level	0,1,0+1,3,5,6,10,30,50,60,JBOD	
Support Hot-Swap	Yes	
Largest Capacity	Supports Large Capacity over 2TB.	
Fan	1x 40W Power Fan + 1x 8cm System Fan	1x 40W Power Fan + 2x 4cm System Fan
Power Supply	Input:100V~240V Output:50~60Hz 200W	
LED Display	Yes	
System Inspection	Yes	
Buzzer On/Off	Yes	
Management GUI	WebGUI & RS-232 COMx Port	
System Requirement	Windows 2000/2003 & Mac 10 & Linux 2.4 or above	
Safety Guarantee	CE/FCC	
Dimension (mm)	177W x 270D x 274H	430W x 420D x 43H
Weight (kg)	7.4	7
Accessories	CD / User's Manual / AC Power Cable / Accessories bag / RS232 Cable	

